



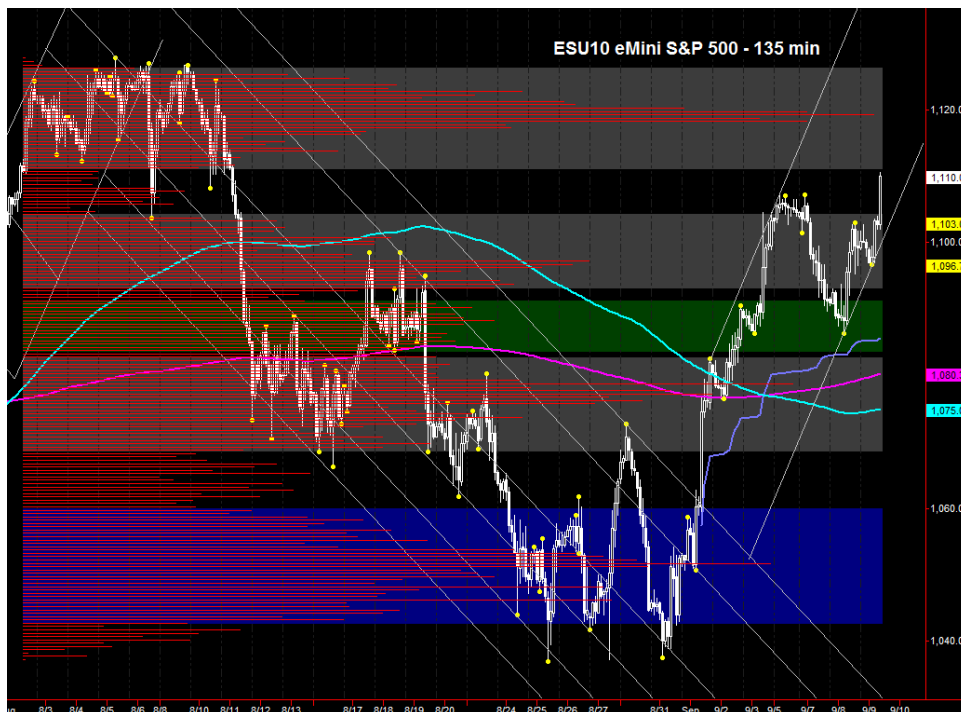
COMMENTARY FOR THE eMINI S&P 500 MAR 2010 CONTRACT (the "ES")

The Precise Take – Equity futures rally overnight

Big Picture Analysis: We were expecting another shakeout of weak longs prior to resumption of the rally yesterday, however, the ES rallied over 1100 and has reclaimed last week's highs. The risk markets look favorable to equities overnight, and the 1119.25 target is in sight. The cash S&P 500 and SPY should gap above trendline resistance drawn from the April 26 and August 9, 2010 highs. A close over it should generate additional upside follow through. While not the most likely scenario, we would still be on alert for the possibility of a shakeout of weak longs if the overnight strength is reversed early. Specifically, day-session-only R1 at 1104.00 (near yesterday's high) should act as support, and a close below 1098 would be viewed as a significant failure. We'll be watching the Australian vs US Dollar cross as it approaches the 0.932 to 0.940 resistance band that held in 2009 and so far in 2010. A strong downward reaction could warn of trouble for equities, while a strong move through would be supportive.

Trading Today: The upper end of the projected range contains day-session-only R3, from 1114.00 to 1114.75. The lower end contains day-session-only R1 and yesterday's high, from 1103.00 to 1104.00. There are no major scheduled news items for the week, so the markets could be particularly sensitive to unscheduled announcements, particularly those out of Europe.

Today's volume profile:



Day Trading Guide

Daily Gaps

1098.25 (4:00 pm close)
1099.25 (4:15 pm settlement)

Daily Pivots

1098.25 (day-session-only)
1096.25 (day & overnight sessions)

Unfilled Gaps

1142.75 to 1150.00 (price)
1101.50 to 1108.25 (price)
1054.25 to 1061.00 (price)

Upside Targets

1110.25, 1119.25, 1124.75, 1132.00

Downside Targets

1022.75, 1027.75, 1032.75, 1051.75,
1061.50, 1075.75, 1096.75

Today's Scheduled News

Major Market Movers

None

Minor Market Movers

30 Yr Bond auction at 1:00 pm

Tuesday's Scheduled News

Major Market Movers

None

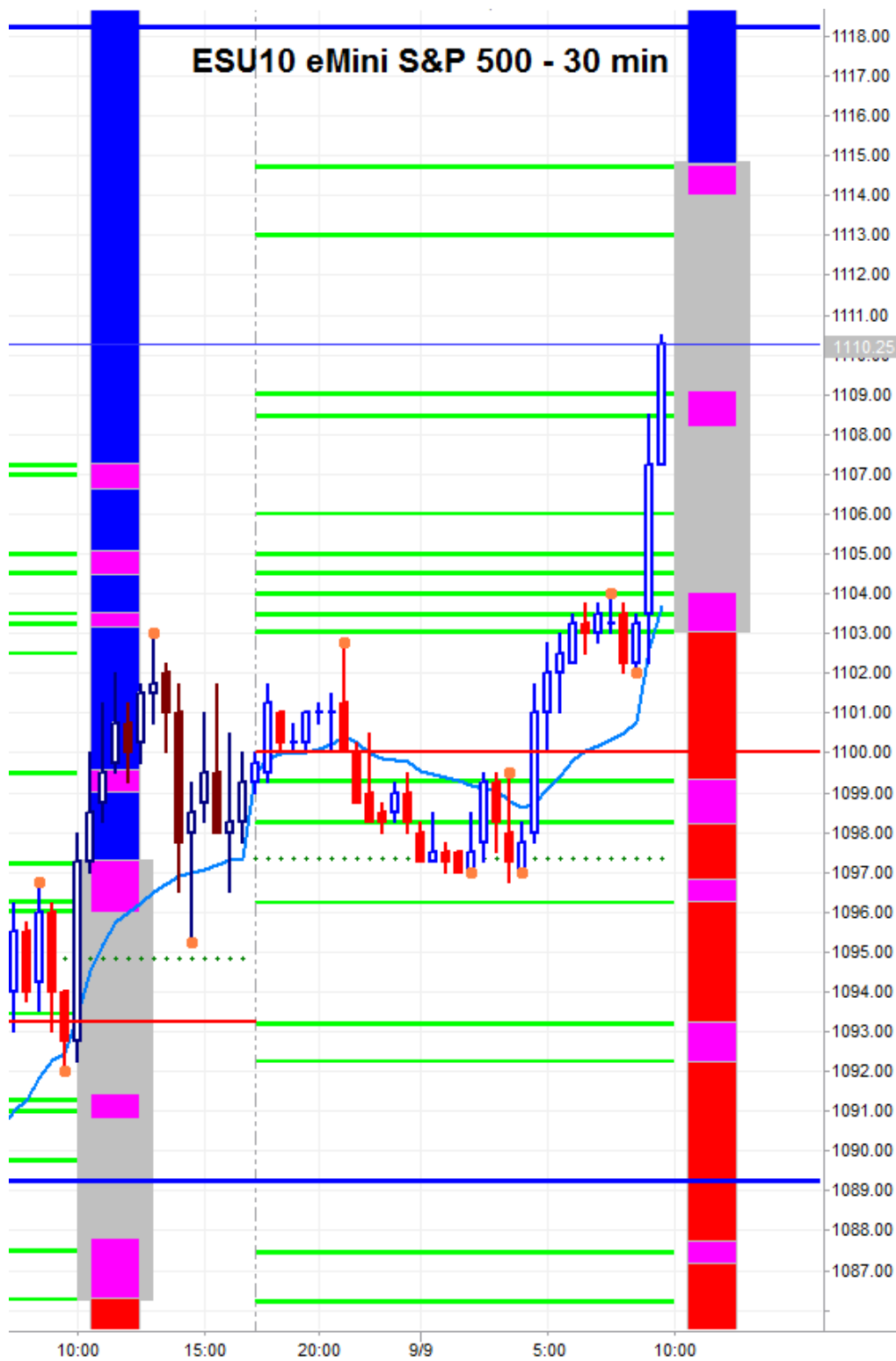
Minor Market Movers

Wholesale Trade

Free intraday updates at <http://www.precisioncapmgt.com>.

Disclaimer: The information in this report is general market commentary and for educational purposes only. No personal trade recommendations are being made hereby. Trading futures and securities is highly risky and you can lose a substantial amount of money. Past performance is not necessarily indicative of future results. All charts herein created with TradeStation.

Today's Support and Resistance:



Legend: Market Profile points of control (POC's), or high volume levels, are calculated each day and displayed as lines colored shades of blue or red. Shades of blue measure POC's over the life of the contract. Shades of red measure POC's for the previous day only. Confluence areas of support and resistance are calculated using Fibonacci retracement and extensions, market profile POC, and pivot formulas calculated on monthly, weekly and daily (day-session-only and day/overnight combined) time frames. These areas are drawn as shaded green boxes. Previously drawn areas have not been adjusted retroactively.

Free intraday updates at <http://www.precisioncapmgmt.com>.

Disclaimer: The information in this report is general market commentary and for educational purposes only. No personal trade recommendations are being made hereby. Trading futures and securities is highly risky and you can lose a substantial amount of money. Past performance is not necessarily indicative of future results. All charts herein created with TradeStation.