

The PRECISION REPORT

Precise Market Timing



COMMENTARY FOR THE eMINI S&P 500 DEC 2009 CONTRACT (the "ES")

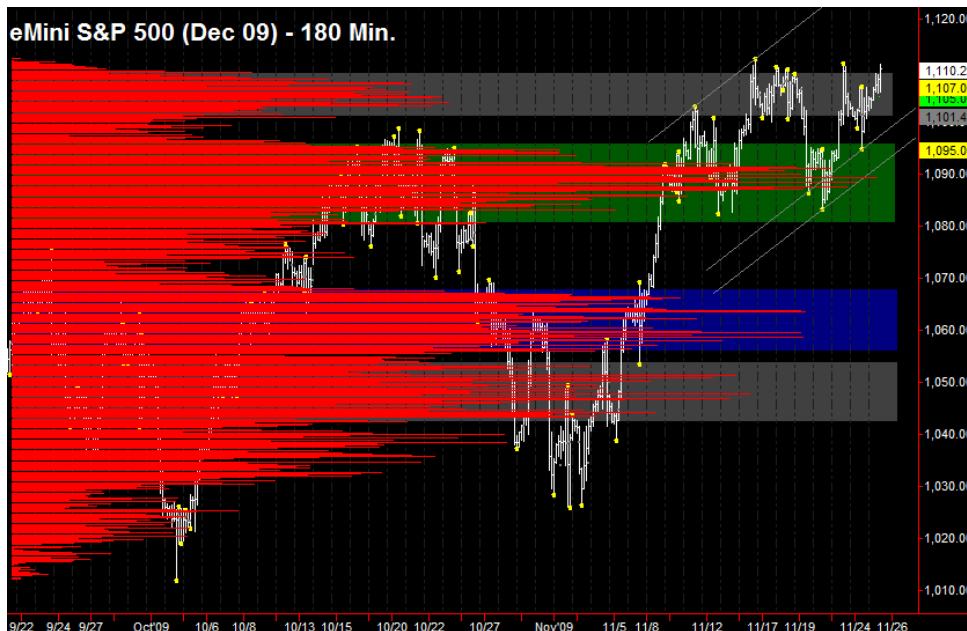
The Precise Take – ES attempting to punch through to new highs ahead of holiday

Leaders Analysis: Only the weak US Dollar seems to agree with equities strength, as 30 Year T-Bonds have broken through resistance and the EuroYen is trading under its 200 day moving average. However, with the shortened week and many professionals already gone, correlations can stay unhinged until Monday, when we expect a reckoning.

Medium Term Analysis: The ES is trading higher off the 8:30 am reports and we would be surprised not to see a material run higher into Friday's abbreviated session. The Time Profile for today and Friday (not pictured due to time constraints) has a bullish bias for each 30 minute time period throughout the days except for the final 30 minutes on Wednesday and the subsequent Friday, when there appears to be profit taking.

Trading Today: The area from 1107.00 to 1108.25 that includes yesterday's high, weekly R1 and the daily R1's should serve as support. Below that, and we would still look for longs from 1101.00 to 1103.00, which includes yesterday's point of control, the daily pivots, closing VWAP and settlement. If that area fails, something has likely gone wrong for the longs. Above and there is resistance from 1112.25 to 1113.75, which includes contract highs and the daily R2's.

Today's volume profile:



Day Trading Guide

Daily Gaps

1104.75 (4:00 pm close)
1103.00 (4:15 pm settlement)

Daily Pivots

1101.75 (day-session-only)
1101.75 (day & overnight sessions)

Unfilled Gaps

1011.75 to 1014.75 (price)
1069.25 to 1074.00 (price)

Upside Targets

1126.25, 1144.75, 1160.75

Downside Targets

1063.00, 1022.75, 1004.75, 975.50,
961.00, 937.25, 899.00, 882.25,
831.25

Countertrend Longs*

1031.50, 1050.50, 1056.50, 1085.75

Countertrend Shorts*

~~1109.25~~

* Countertrend trades have a 2 point target and 2 point stop, are valid during the day session only, and are not recommended on high volume moves or around major news releases.

Today's Scheduled News

Major Market Movers

Consumer Sentiment at 9:55 am
New Home Sales at 10:00 am

Minor Market Movers

EIA Petroleum Stats at 10:30 am
7 Yr Note Auction at 1:00 pm

Friday's Scheduled News

Major Market Movers

None

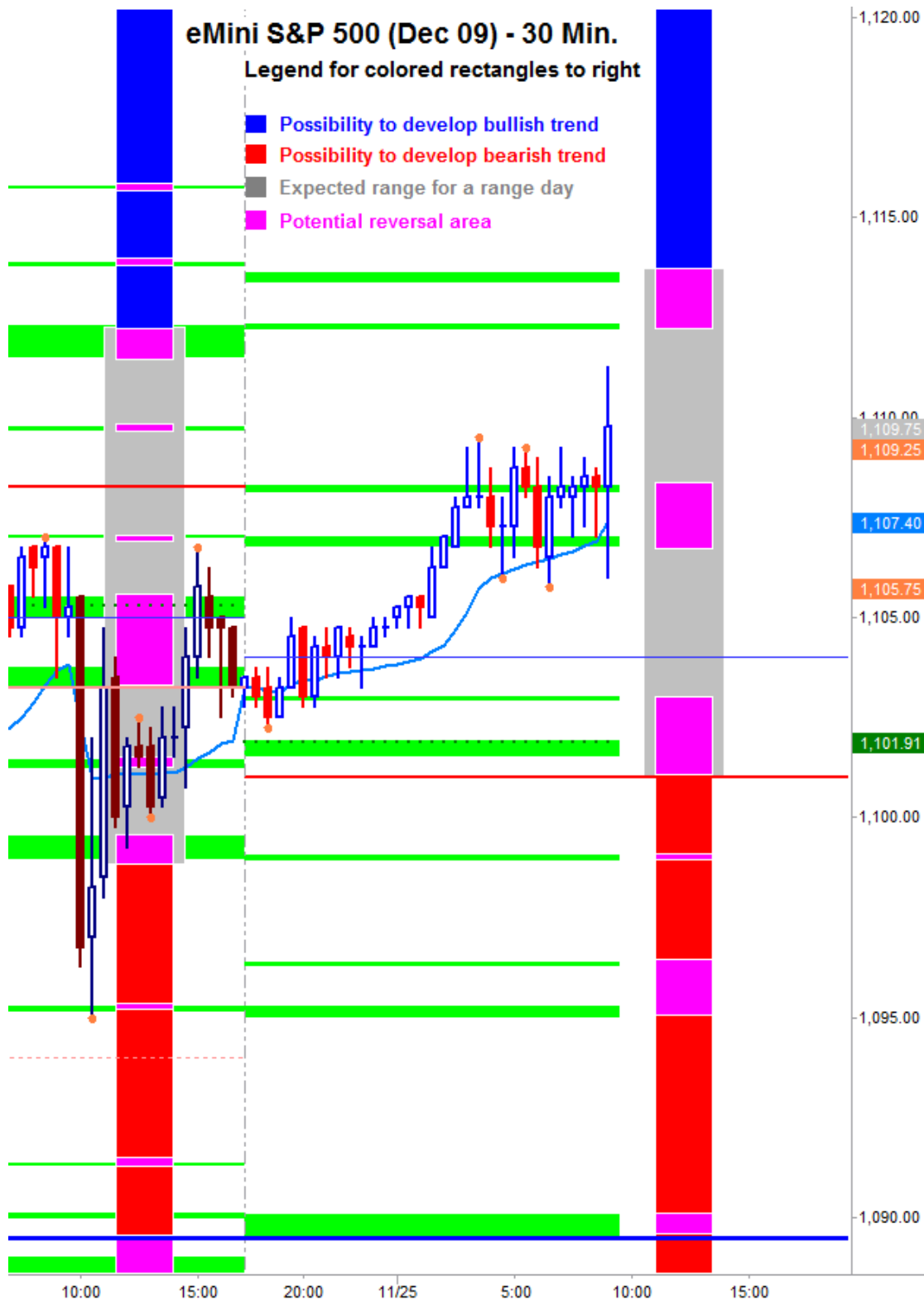
Minor Market Movers

None

Free intraday updates at <http://www.precisioncapmgt.com>.

Disclaimer: The information in this report is general market commentary and for educational purposes only. No personal trade recommendations are being made hereby. Trading futures and securities is highly risky and you can lose a substantial amount of money. Past performance is not necessarily indicative of future results. All charts herein created with TradeStation.

Today's Support and Resistance:



Legend: Market Profile points of control (POC's) are calculated each day and displayed as lines colored shades of blue or red. Shades of blue measure POC's over the life of the contract. Shades of red measure POC's for the previous day only. Confluence areas of support and resistance are calculated using Fibonacci retracement and extensions, market profile POC, and pivot formulas calculated on monthly, weekly and daily (day-session-only and day/overnight combined) time frames. These areas are drawn as shaded green boxes. Previously drawn areas have not been adjusted retroactively.

Free intraday updates at <http://www.precisioncapmgt.com>.

Disclaimer: The information in this report is general market commentary and for educational purposes only. No personal trade recommendations are being made hereby. Trading futures and securities is highly risky and you can lose a substantial amount of money. Past performance is not necessarily indicative of future results. All charts herein created with TradeStation.