

# The PRECISION REPORT

Precise Market Timing



March 17, 2010

## COMMENTARY FOR THE eMINI S&P 500 MAR 2010 CONTRACT (the "ES")

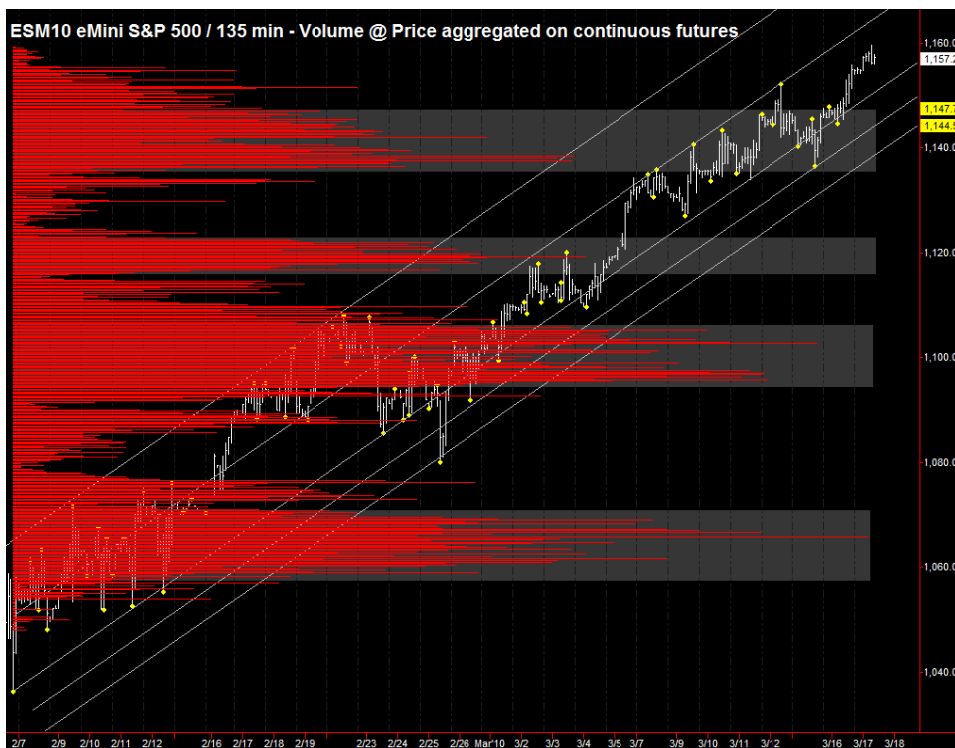
**The Precise Take** – Equity futures extend gains overnight, but leaders at inflection points

**Leaders Analysis:** The US Dollar finally reached 79.53 support overnight, the **38.2% retracement** of its January to February rally, which also coincides with long term pivot and 50 day moving average support. While it could eventually reach the 50% retracement at 78.97, it should bounce here first. Similarly, the EuroYen and 30 Year T-Bond yields are at potential reversal levels, so the leaders are equities bearish today.

**Medium Term Analysis:** Yesterday, the ES cleared critical resistance at 1152.75 and is up materially overnight, having reached precisely the March contract high of 1159.50. This should pave the way for higher prices, however, not necessarily immediately. Given the leaders' stance, we expect to see at least a test of ~1153 today, or possibly ~1147 tomorrow. There's no more news today, tomorrow is full, then options expiration is on Friday.

**Trading Today:** The upper end of the projected range is the overnight high in confluence with the daily R1's, from 1158.50 to 1159.50. If the ES is able to push above, we would also consider a short at the daily R2's, from 1162.25 to 1163.00. To the downside, the lower end of the projected range includes the daily pivots, monthly R2 and a long term high volume level, from 1151.50 to 1153.25.

**Today's volume profile:**



### Day Trading Guide

#### Daily Gaps

1154.75 (4:00 pm close)  
1154.75 (4:15 pm settlement)

#### Daily Pivots

1152.00 (day-session-only)  
1151.75 (day & overnight sessions)

#### Unfilled Gaps

1120 to 1121.50 (price)

#### Upside Targets

1164.00, 1196.00, 1235.00

#### Downside Targets

1119.25, 1097.00, 1083.00, 1065.75,  
1022.75, 1004.75, 975.50, 961.00

#### Countertrend Longs\*

1141.75, 1151.50

#### Countertrend Shorts\*

None

\* Countertrend trades have a 2 point target and 2 point stop, are valid during the day session only, and are not recommended on high volume moves or around major news releases.

### Today's Scheduled News

#### Major Market Movers

None

#### Minor Market Movers

None

### Tomorrow's Scheduled News

#### Major Market Movers

CPI at 8:30 am  
Jobless Claims at 8:30 am

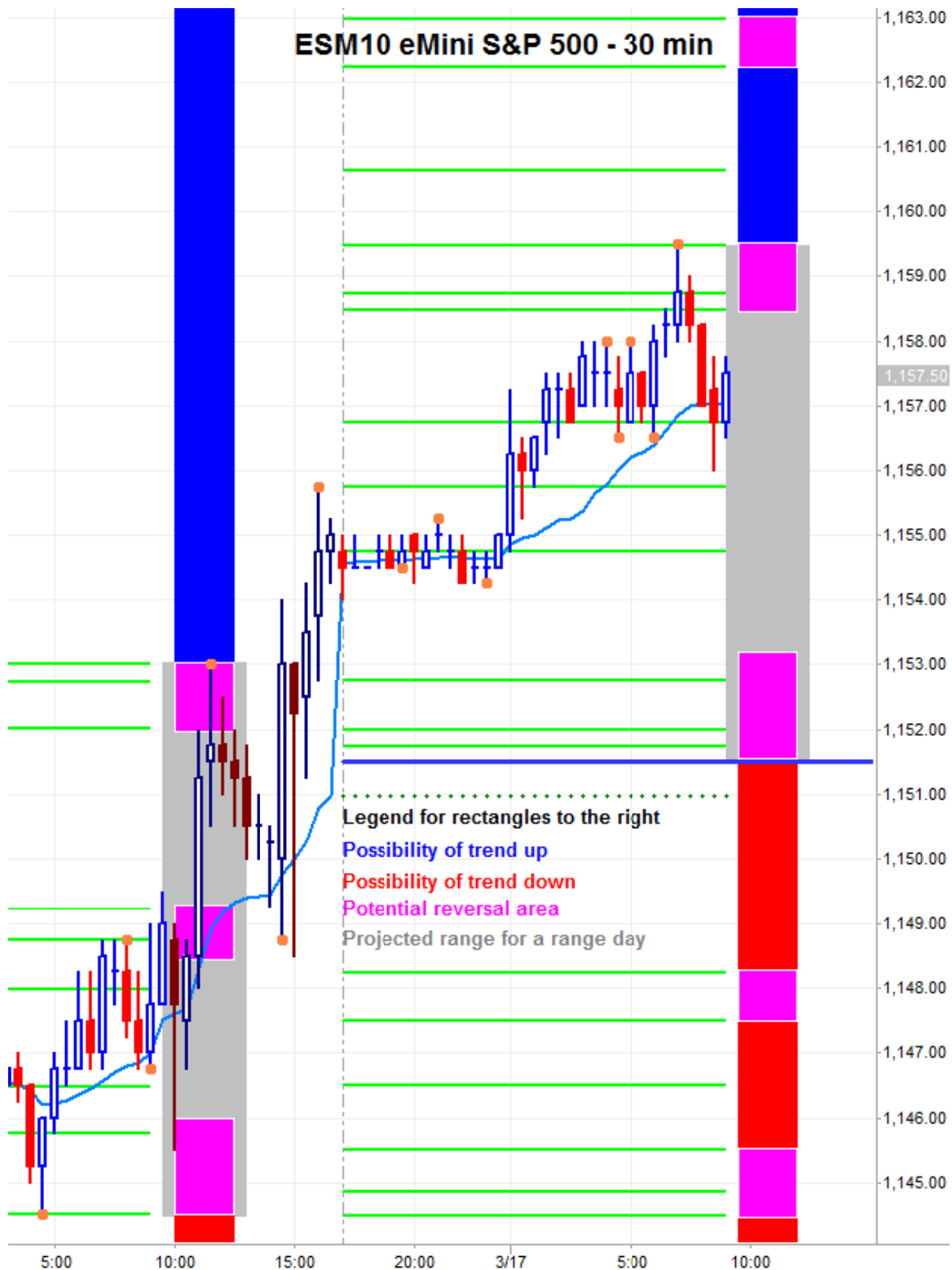
#### Minor Market Movers

Leading Indicators at 10:00 am  
Phili Fed Survey at 10:00 am

Free intraday updates at <http://www.precisioncapmgt.com>.

Disclaimer: The information in this report is general market commentary and for educational purposes only. No personal trade recommendations are being made hereby. Trading futures and securities is highly risky and you can lose a substantial amount of money. Past performance is not necessarily indicative of future results. All charts herein created with TradeStation.

**Today's Support and Resistance:**



**Legend:** Market Profile points of control (POC's), or high volume levels, are calculated each day and displayed as lines colored shades of blue or red. Shades of blue measure POC's over the life of the contract. Shades of red measure POC's for the previous day only. Confluence areas of support and resistance are calculated using Fibonacci retracement and extensions, market profile POC, and pivot formulas calculated on monthly, weekly and daily (day-session-only and day/overnight combined) time frames. These areas are drawn as shaded green boxes. Previously drawn areas have not been adjusted retroactively.

Free intraday updates at <http://www.precisioncapmgt.com>.

Disclaimer: The information in this report is general market commentary and for educational purposes only. No personal trade recommendations are being made hereby. Trading futures and securities is highly risky and you can lose a substantial amount of money. Past performance is not necessarily indicative of future results. All charts herein created with TradeStation.