

The PRECISION REPORT

Precise Market Timing



COMMENTARY FOR THE eMINI S&P 500 MAR 2010 CONTRACT (the "ES")

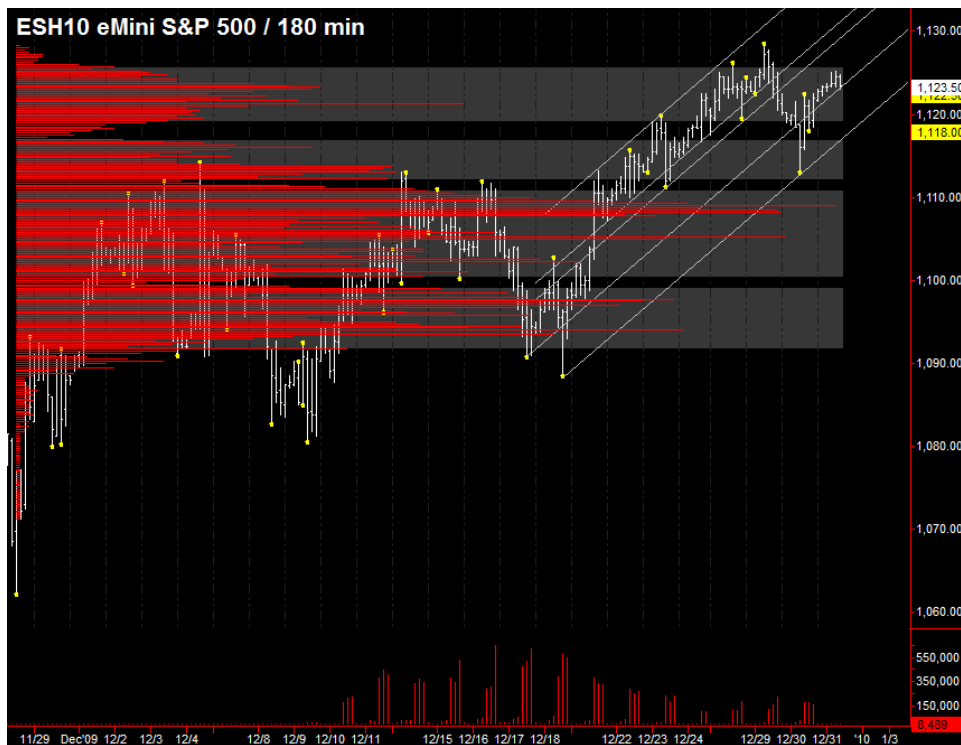
The Precise Take – ES testing highs on last trading day of 2009

Leaders Analysis: Yesterday, the EuroYen suggested that global appetite for risk remained strong and, indeed, equities are up again near highs. If the EuroYen closes above its 200 day moving average where it is trading now, there should be continuation of the move in the new year.

Medium Term Analysis: Bullish seasonality should help equities early next week, when traders will be positioning ahead of Friday's Employment Situation.

Trading Today: As has been the case recently, we don't expect both sides of the projected range to be fulfilled. Once one end has been reached, there may be at best a move back to the middle of the range. Today's projected range to the upside is 1128.50 (contract high) to 1128.75 (combined session R2), and to the downside is 1119.00 (day-session-only S1) to 1119.25 (combined session pivot), which is also roughly in confluence with trendline support in the below chart. The daily gap have been getting filled in these low volatility sessions, so an initial move down to 1121.25 to 1122.00, with a reversal to the upside is also a possibility.

Today's volume profile:



Day Trading Guide

Daily Gaps

1121.25 (4:00 pm close)
1122.00 (4:15 pm settlement)

Daily Pivots

1120.75 (day-session-only)
1119.25 (day & overnight sessions)

Unfilled Gaps

1063.00 to 1069.25 (price)
1099.00 to 1103.00 (price)
1117.25 to 1118.00 (price)

Upside Targets

1144.75, 1160.75

Downside Targets

1109.00, 1063.00, 1022.75, 1004.75,
975.50, 961.00, 937.25, 899.00,
882.25, 831.25

Countertrend Longs*

1110.75, 1115.25, 1120.25

Countertrend Shorts*

1124.50

* Countertrend trades have a 2 point target and 2 point stop, are valid during the day session only, and are not recommended on high volume moves or around major news releases.

Today's Scheduled News

Major Market Movers

Jobless Claims at 8:30 am

Minor Market Movers

None

Monday's Scheduled News

Major Market Movers

ISM Mfg Idx at 10:00 am

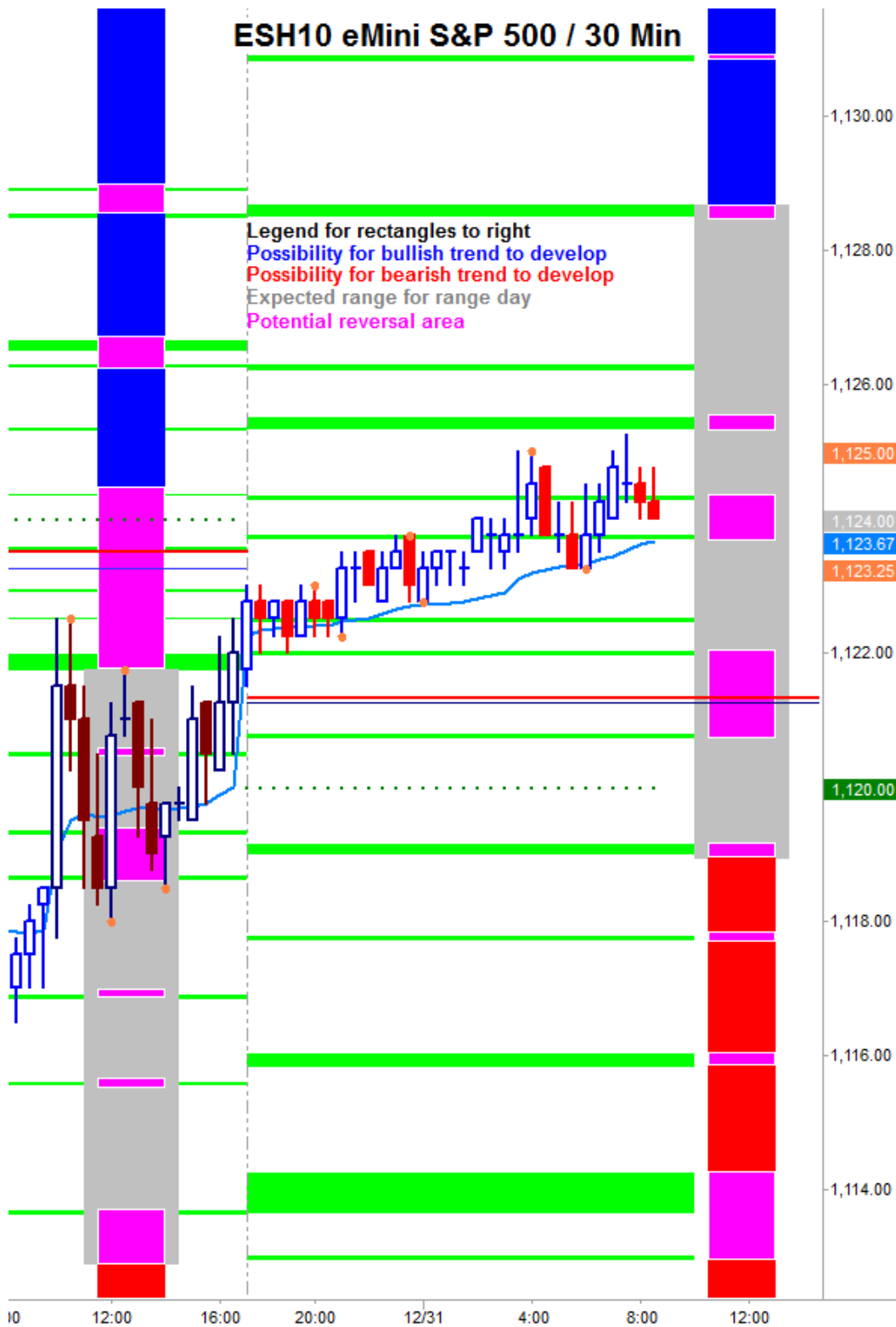
Minor Market Movers

Construction Spending at 10:00 am

Free intraday updates at <http://www.precisioncapmgt.com>.

Disclaimer: The information in this report is general market commentary and for educational purposes only. No personal trade recommendations are being made hereby. Trading futures and securities is highly risky and you can lose a substantial amount of money. Past performance is not necessarily indicative of future results. All charts herein created with TradeStation.

Today's Support and Resistance:



Legend: Market Profile points of control (POC's) are calculated each day and displayed as lines colored shades of blue or red. Shades of blue measure POC's over the life of the contract. Shades of red measure POC's for the previous day only. Confluence areas of support and resistance are calculated using Fibonacci retracement and extensions, market profile POC, and pivot formulas calculated on monthly, weekly and daily (day-session-only and day/overnight combined) time frames. These areas are drawn as shaded green boxes. Previously drawn areas have not been adjusted retroactively.

Free intraday updates at <http://www.precisioncapmgt.com>.

Disclaimer: The information in this report is general market commentary and for educational purposes only. No personal trade recommendations are being made hereby. Trading futures and securities is highly risky and you can lose a substantial amount of money. Past performance is not necessarily indicative of future results. All charts herein created with TradeStation.