

The PRECISION REPORT

Precise Market Timing



December 24, 2009

COMMENTARY FOR THE eMINI S&P 500 MAR 2010 CONTRACT (the "ES")

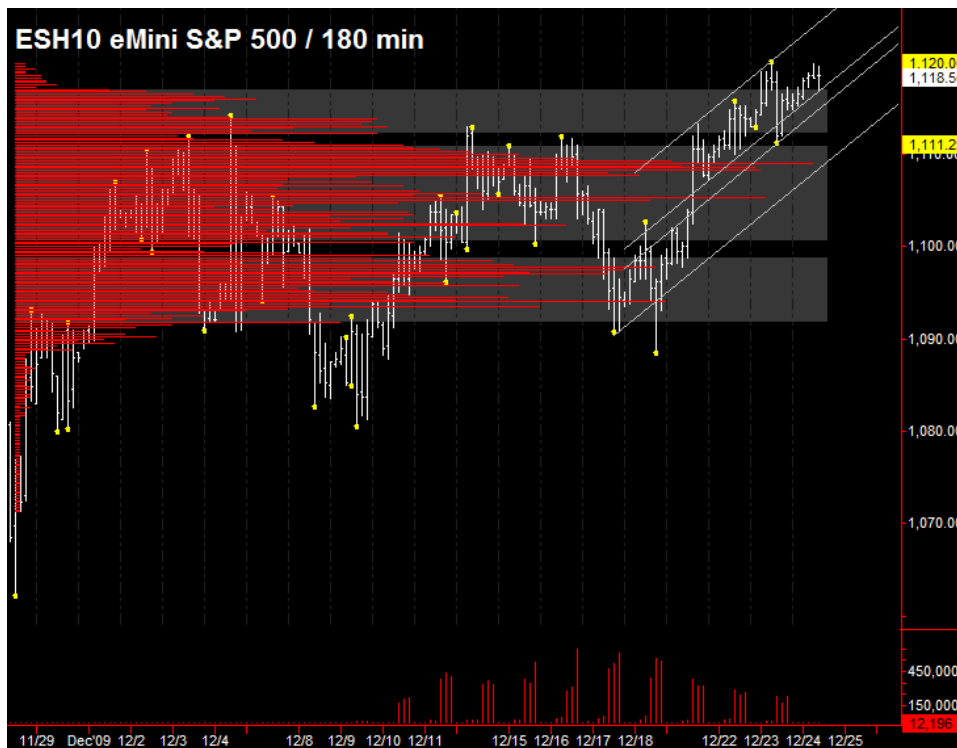
The Precise Take – ES poised to end week near highs

Leaders Analysis: The US Dollar's reversal is aiding equities, and the EuroYen has room to advance before hitting resistance. It looks like there is still a bit room left to go next week for equities, but the Treasury Auctions could get in the way.

Medium Term Analysis: Next week's \$118 B in T-Note auctions will begin Monday (instead of Tuesday, as is the usual). If recent history holds, equities will be down to sideways until the 2 Yr Auction is over at 1:00 pm. European sovereign risk remains, but there were some statements released yesterday that suggest there won't be any major waves until after the new year.

Trading Today: Projected range is 1119.75 to 1120.75 on the upper end (pivot resistance) and 1114.75 to 1116.00 (today's value area) on the lower end. There is a slim possibility of a Christmas push to 1124.25, so we would not want to be short above 1120.75. There is also a slim possibility of a drop to trendline resistance and day-session-only S1 at 1112.00, so we would not want to be long below 1114.75.

Today's volume profile:



Day Trading Guide

Daily Gaps

1116.00 (4:00 pm close)
1115.50 (4:15 pm settlement)

Daily Pivots

1114.75 (day-session-only)
1115.50 (day & overnight sessions)

Unfilled Gaps

1063.00 to 1069.25 (price)
1099.00 to 1103.00 (price)

Upside Targets

1126.25, 1144.75, 1160.75

Downside Targets

1063.00, 1022.75, 1004.75, 975.50,
961.00, 937.25, 899.00, 882.25,
831.25

Countertrend Longs*

1110.75, 1115.25

Countertrend Shorts*

None

* Countertrend trades have a 2 point target and 2 point stop, are valid during the day session only, and are not recommended on high volume moves or around major news releases.

Today's Scheduled News

Major Market Movers

None

Minor Market Movers

None

Monday's Scheduled News

Major Market Movers

None

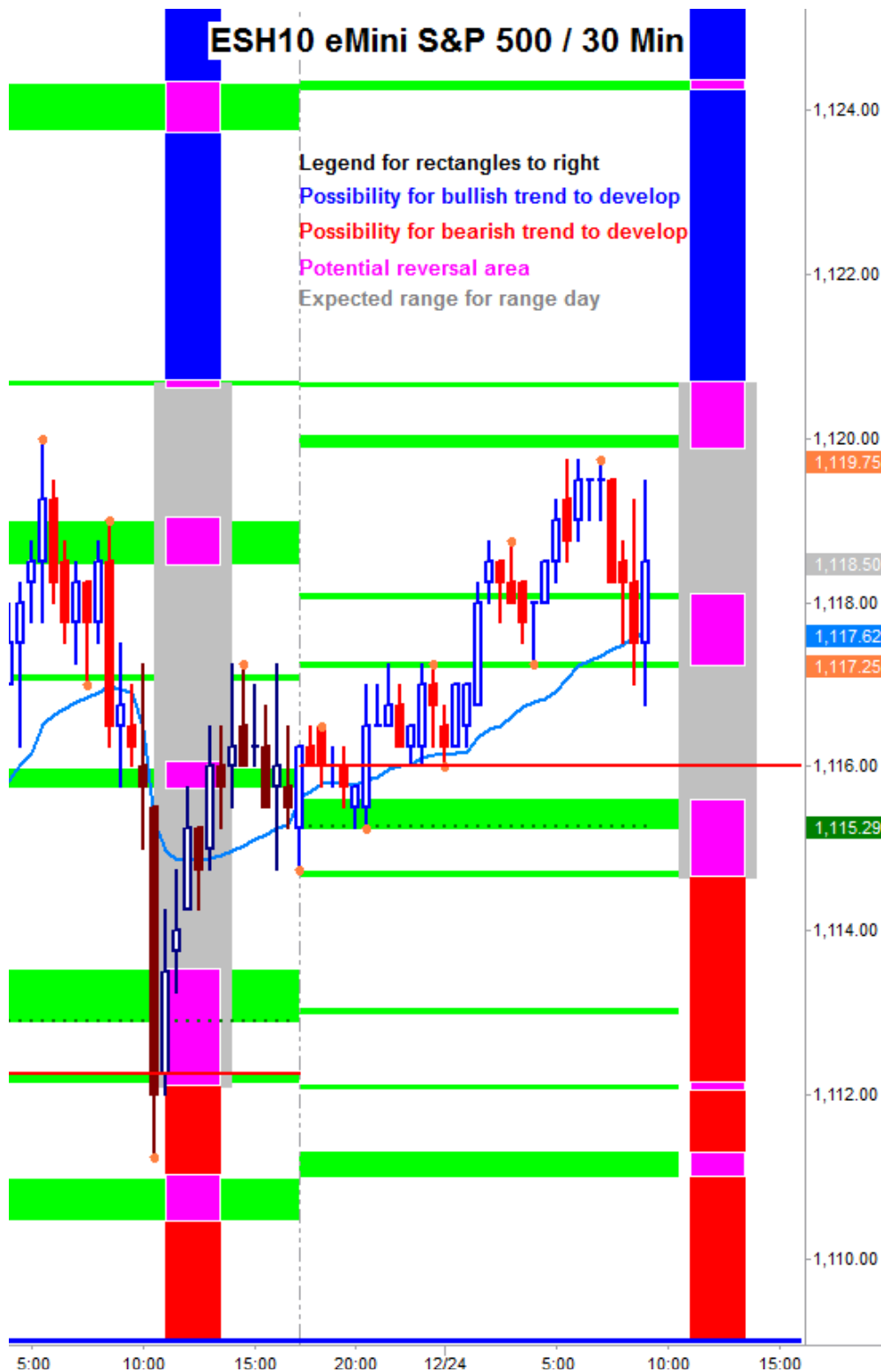
Minor Market Movers

2 Yr Auction at 1:00 pm

Free intraday updates at <http://www.precisioncapmgt.com>.

Disclaimer: The information in this report is general market commentary and for educational purposes only. No personal trade recommendations are being made hereby. Trading futures and securities is highly risky and you can lose a substantial amount of money. Past performance is not necessarily indicative of future results. All charts herein created with TradeStation.

Today's Support and Resistance:



Legend: Market Profile points of control (POC's) are calculated each day and displayed as lines colored shades of blue or red. Shades of blue measure POC's over the life of the contract. Shades of red measure POC's for the previous day only. Confluence areas of support and resistance are calculated using Fibonacci retracement and extensions, market profile POC, and pivot formulas calculated on monthly, weekly and daily (day-session-only and day/overnight combined) time frames. These areas are drawn as shaded green boxes. Previously drawn areas have not been adjusted retroactively.

Free intraday updates at <http://www.precisioncapmgt.com>.

Disclaimer: The information in this report is general market commentary and for educational purposes only. No personal trade recommendations are being made hereby. Trading futures and securities is highly risky and you can lose a substantial amount of money. Past performance is not necessarily indicative of future results. All charts herein created with TradeStation.