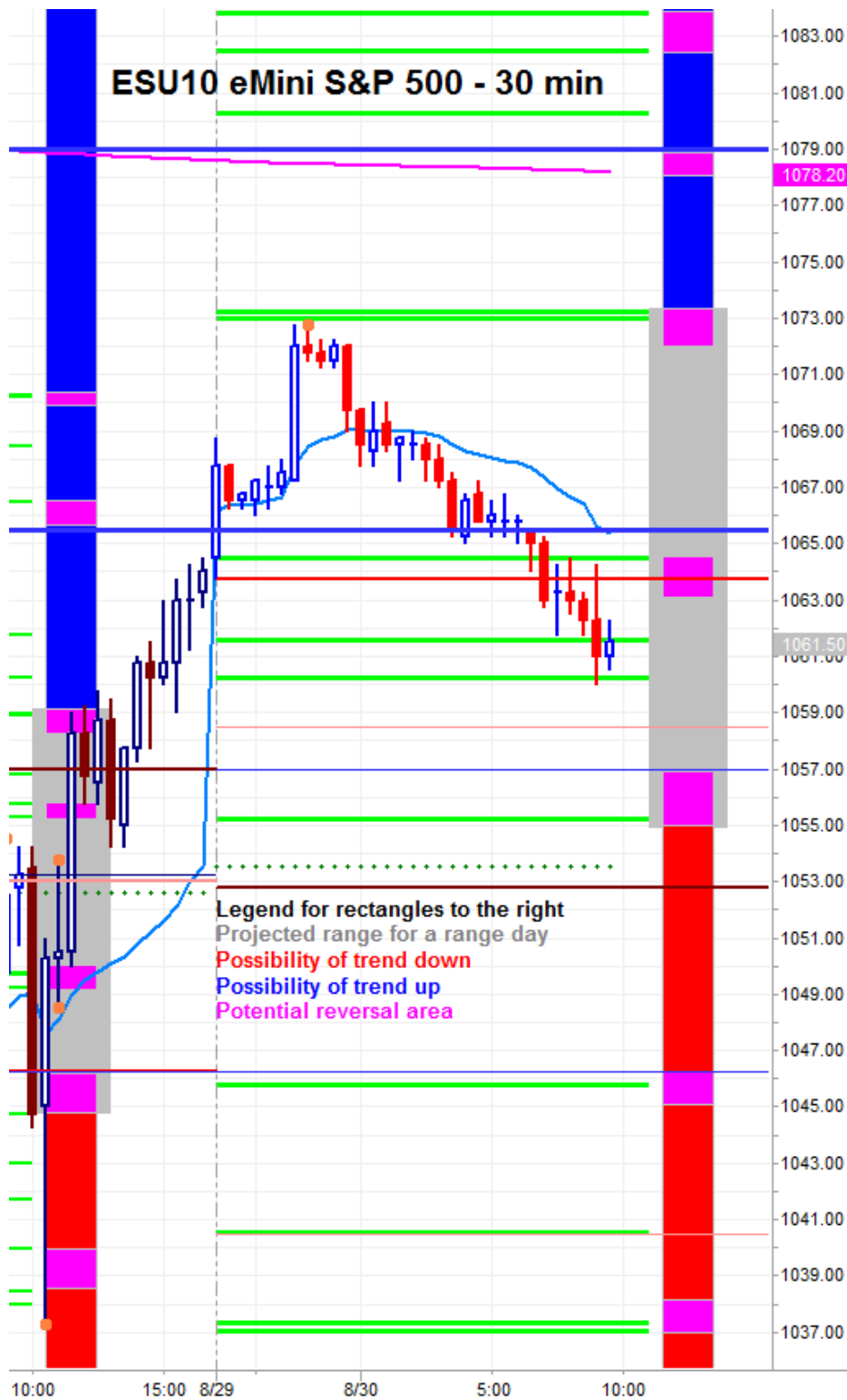


Today's Support and Resistance:



Legend: Market Profile points of control (POC's), or high volume levels, are calculated each day and displayed as lines colored shades of blue or red. Shades of blue measure POC's over the life of the contract. Shades of red measure POC's for the previous day only. Confluence areas of support and resistance are calculated using Fibonacci retracement and extensions, market profile POC, and pivot formulas calculated on monthly, weekly and daily (day-session-only and day/overnight combined) time frames. These areas are drawn as shaded green boxes. Previously drawn areas have not been adjusted retroactively.

Free intraday updates at <http://www.precisioncapmgt.com>.

Disclaimer: The information in this report is general market commentary and for educational purposes only. No personal trade recommendations are being made hereby. Trading futures and securities is highly risky and you can lose a substantial amount of money. Past performance is not necessarily indicative of future results. All charts herein created with TradeStation.